

Fostering Positive Relationships with Key Education Stakeholders

October 7, 2024

Pike County Schools and AASB

Leadership for Creating Positive Climate and Culture

TEACHER LEADERSHIP ACADEMY –
TLA

PARENTS, PARTNERS, AND PIKE
COUNTY SCHOOLS – P3





PORT AUTHORITY



Ms. Hurst-GES

DAY 1: ORIENTATION AND SCHOOL FINANCE

- Orientation
- Staffing Exercise - Superintendent
- Budgeting - CSFO
- School Finance in General
- Challenges

INSTITUTIONAL HISTORY

- Pike County, Alabama was established in 1821 and is among the oldest counties in the state. It is nestled in the southeastern corner of Alabama and bordered by Montgomery and Bullock Counties on the north, Coffee and Dale Counties to the south, Crenshaw County is to the west and Barbour County is east. Pike County's population is about 33,000.
- The Pike County School System was founded in 1854 and serves children residing in the incorporated cities and towns within Pike County including Banks, Brundidge, and Goshen excluding the City of Troy. The Pike County School System also serves unincorporated communities outside the city of Troy but within the county. These include the communities of Linwood, Saco, Stills Crossroads, Monticello, Pronto, Hamilton Crossroads, Tennille, Springhill, Henderson, Dugan, Petry, Ansley, Shellhorn, China Grove, and Meeksville. The school system currently has approximately 2100 students enrolled.

MISSION AND CORE VALUES/GUIDING PRINCIPLES

- *Mission*

The mission of Pike County Schools is to provide excellence in education, producing graduates ready for college, careers, and life-long success. With an unwavering commitment to STEM education, the Pike County Board of Education ensures that students are equipped with the critical skills and knowledge needed to excel in science, technology, engineering, and mathematics; thereby empowering them for success in our ever-evolving world.

- *Core Values*

Guiding Principles are 1) maintain high expectations and performance standards for all students and adults, 2) ensure academic accountability, fiscal responsibility, and clear communication, 3) initiate and sustain effective collaboration with families, community agencies, and business-industry partners, 4) engage in research to provide innovative instruction, proficient technology use, and expanded student opportunities, and 5) deliver friendly and courteous service in safe, clean, well-maintained schools.

- In 2014, the Pike County Schools participated in an Advanced ED External Review. Concurrently, the Board engaged itself in a well-coordinated Strategic Planning process led by Burke Consulting Group, Birmingham, AL. The current mission statement, core values, and guiding principles developed during this process remain relevant today. The beliefs articulated in this document remain essential components of the messaging communicated to stakeholders through print, television, radio, social media, and face-to-face communications. The Board and its Leadership Team annually reviews, reflects on, and adjusts as necessary its stated Core Values.

SYSTEM PHILOSOPHY OF EDUCATION

- Although constantly evolving, Pike County current educational philosophy most resembles Marzano. Marzano believes that teachers who set goals and check for understanding will be effective. Teachers should also give positive feedback for student progress. If students do not understand, a teacher should go back and re-teach certain concepts.

-

As does Marzano, the system believes that there are three areas central to improving outcomes for students. These are: fostering and sustaining system-wide teaching strategies; providing effective feedback to students; and building a strong student academic vocabulary. The system's instructional planning template incorporates Marzano while also emphasizing the need for faculty to integrate a STEM component.

OTHER TOPICS

- Enrollment trends
- Performance data
- Instructional Framework
- Recruitment, Induction, Retention, Evaluation
- Professional Development – Book Studies
- Instructional Initiatives



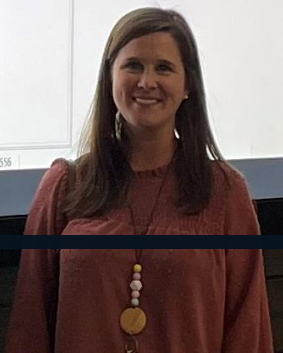
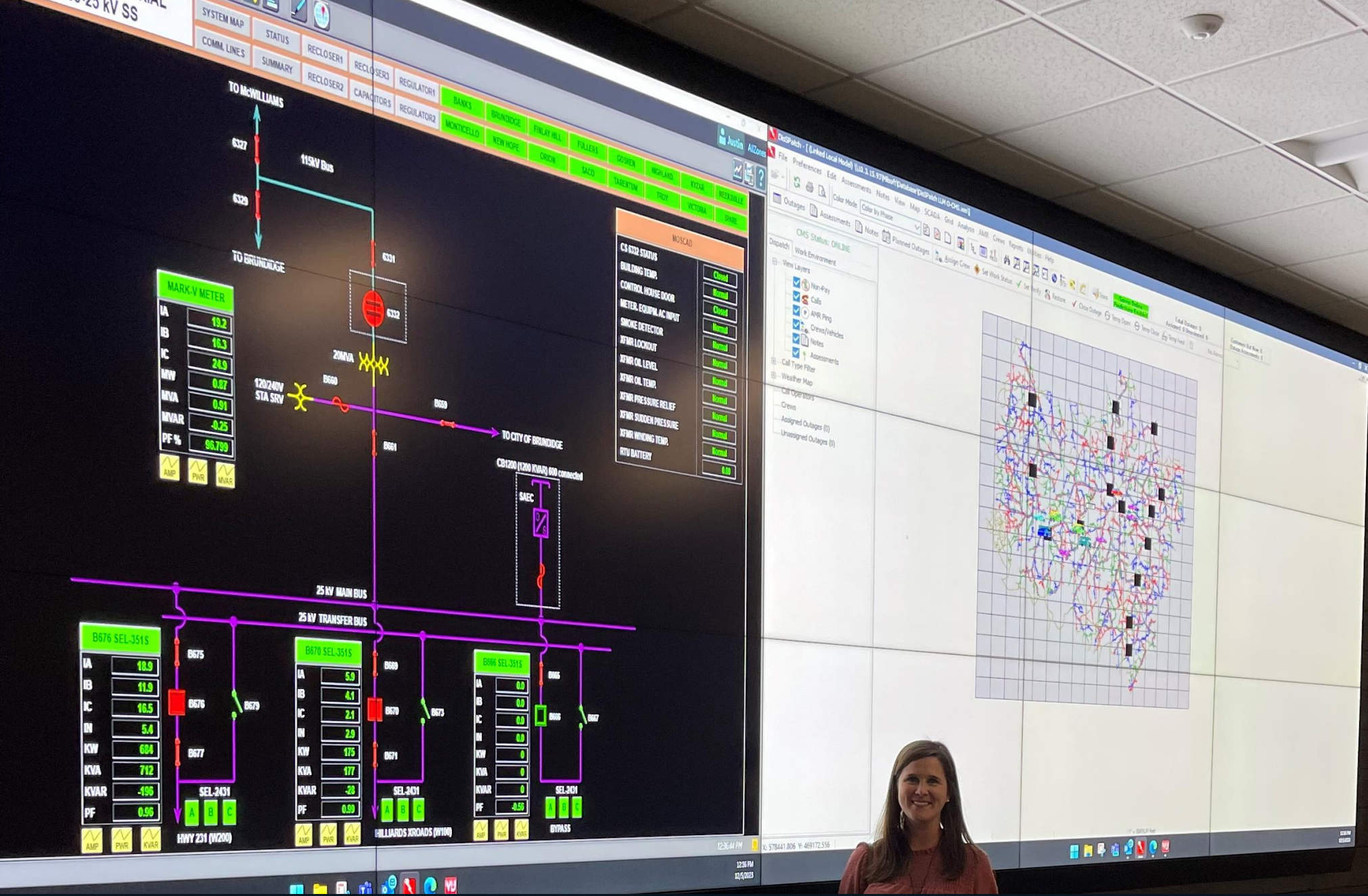


DAY 2: BUSINESS AND INDUSTRY TOURS

- Business and Industry Tours
 - Rex Lumber
 - K & W Plastics
 - Troy Regional Medical Center
 - South Alabama Electric Cooperative



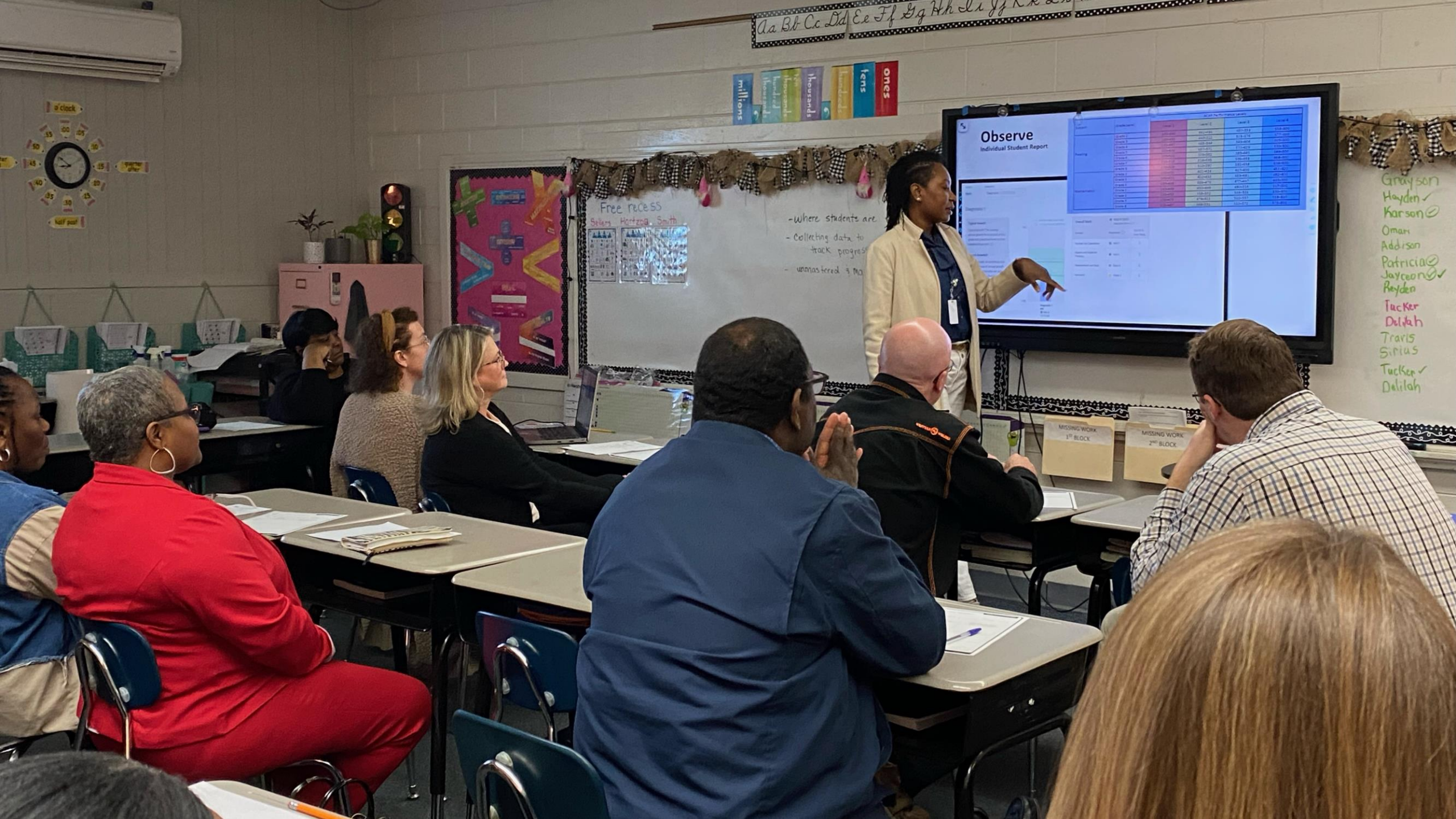






DAY 3: SCHOOL TOURS

- School Tours
 - GES – Use of iReady – Data
 - GHS – Ag Academy
 - Banks School – BARR Program/MTSS, STEM Smart Labs
 - PCES – Data Room
 - PCHS – Business and Finance Academy
 - Center for Advance Academic and Accelerated Learning – STEM
 - Troy Pike Center for Technology – CTE
 - Dual Enrollment – Academy Programs, Short-term Certificate Programs – ESCC and TU



Aa Bb Cc Dd Ee Ff Gg Hh Ii Jj Kk Ll

ones
tens
hundreds
thousands
millions



Free recess
Sellers, Hartzog, Smith

- Where students are
- Collecting data to track progress
- unmastered 3 Mo

Observe Individual Student Report

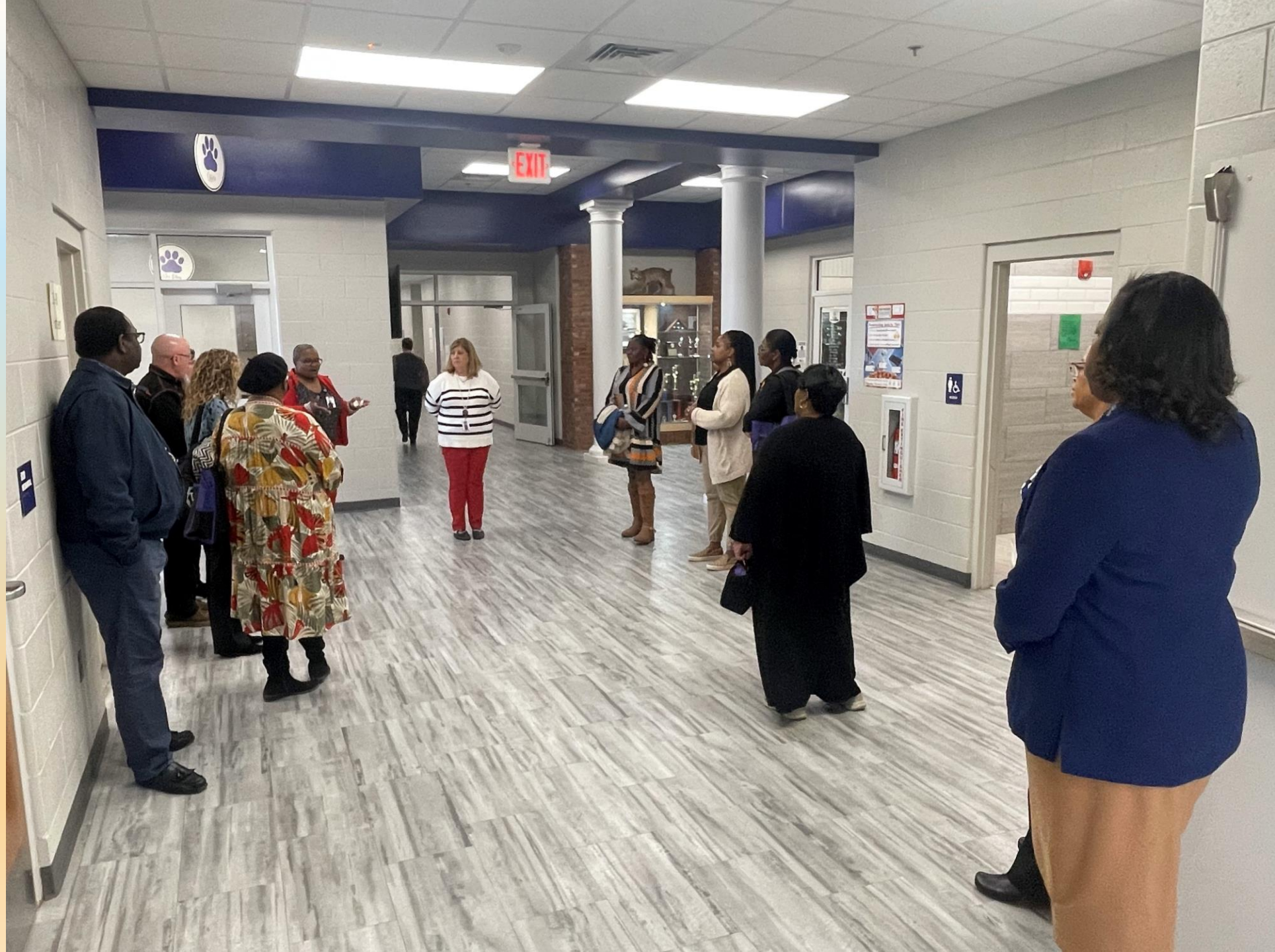
Student	Level 1	Level 2	Level 3
Student 1	80%	85%	90%
Student 2	75%	80%	85%
Student 3	90%	95%	100%
Student 4	65%	70%	75%
Student 5	85%	90%	95%
Student 6	70%	75%	80%
Student 7	80%	85%	90%
Student 8	75%	80%	85%
Student 9	85%	90%	95%
Student 10	70%	75%	80%

Grayson
Hayden ✓
Karson ✓
Oman
Addison
Patricia ✓
Jayceon ✓
Rayden
Tucker
Daljah
Travis
Sirius
Tucker ✓
Daljah

MISSING WORK
1st BLOCK

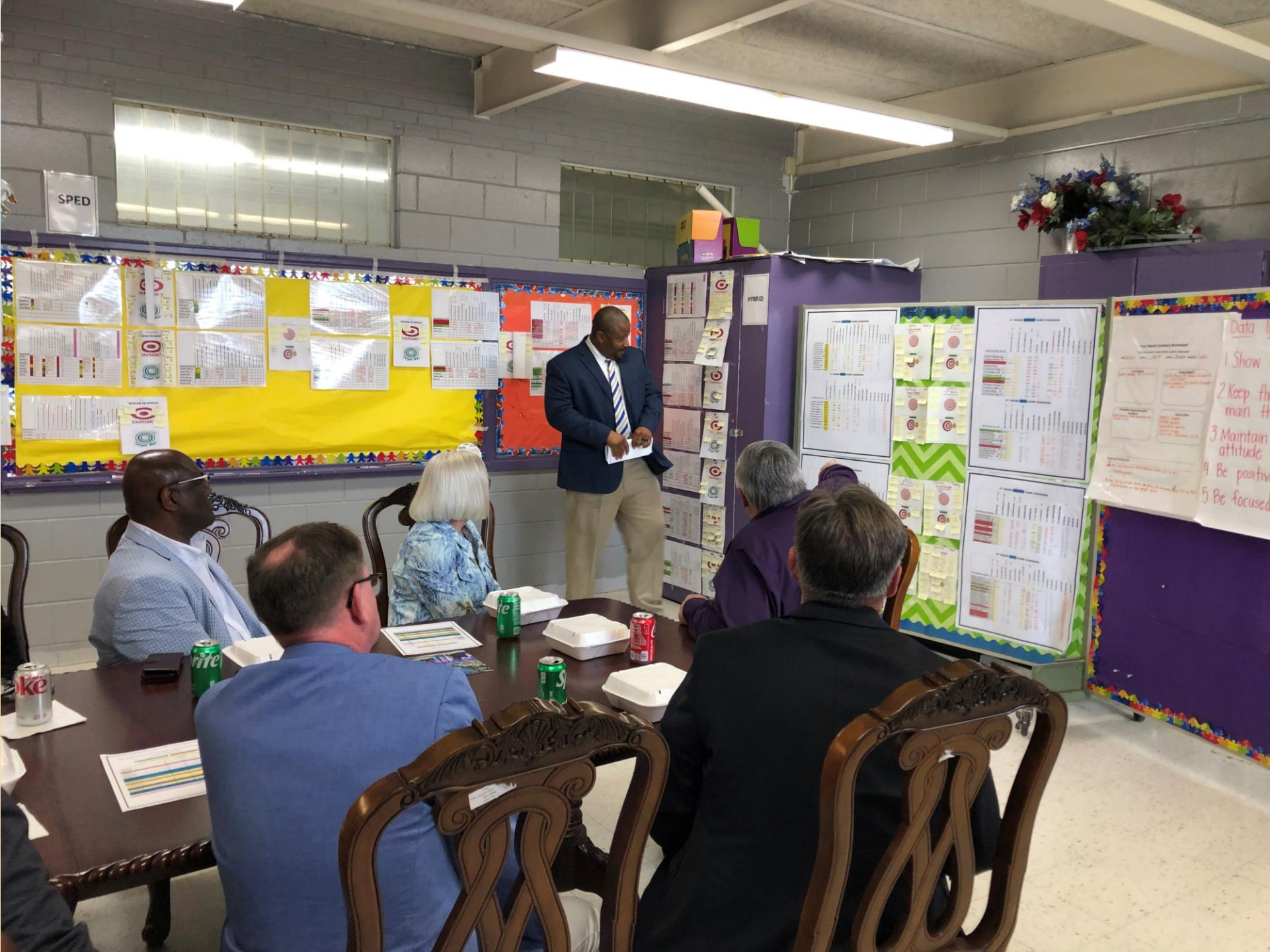
MISSING WORK
2nd BLOCK













DAY 4: SCHOOL LAW REVIEW

Teacher Leadership Academy
Parents, Partners and Pike County
Schools
TLA and P3 Academy

TOPICS:

1st, 4th and 14th Amendments

Local, State, and Federal Courts

Other Regulatory Agencies

Supremacy Clause

Case Law

DAY 5: LEGISLATIVE ADVOCACY

- Legislative advocacy
 - 2024 Legislative Session
 - State House Visit
 - Alabama Association of School Board Visit
 - SSA, CLAS, AEA









ASSOCIATION OF SCHOOL BOARDS

←
ALL VISITORS
press buzzer
on wall
to your left for
assistance.





GRADUATION AND RECEPTION



